



Here's Your Hospital

SPECIAL RIDDLEGRAM EDITION REPRODUCES FLOOR PLANS MEMORIAL, COMMEMORATIVE OPPORTUNITIES DESCRIBED

Souvenir Issue Designed For Use On Hospital Tours Shows Prospective Donors Locations Of Memorial Units

This is a very special issue of the Riddlegram. In it you won't find the word 'auxiliary' anywhere except here and on page 3, despite the fact that the Riddlegram ordinarily carries nothing but news of Riddle's Associated Auxiliaries.

What you will find is a pretty complete picture of the physical layout of Riddle Memorial Hospital--your hospital, prepared especially for use as a guide to the thousands of people who will be going through the hospital as visitors, both during the Open House period in February and before and after that famal "introduction" of Riddle Memorial Hospital to its community.

You will also find a complete list of the memorial and commemorative units available to prospective donors, including their exact location in the building, a description of the unit, and the estimated donation required to cover the construction and equipment cost of each unit.

People who find in these pages a unit or area they would like to establish as a memorial or commemorative can obtain further information about this by phoning the Riddle Fund Office, LOwell 6-1582, or the Hospital Business Office, LOwell 6-4009, or by writing to any member of the Board of Directors (whose names are listed on the back page of this issue).

There Is A Basement

No hospital would be complete without one. And Riddle Memorial Hospital has a basement. It is not shown on the following pages because it is not an area into which either visitors or patients would normally wander.

It is accessible, however, if you want to see it. There is an entrance from the main stairway in the center of the building or by the East elevator. There is also an exterior entrance on the south side of the East Wing.

The basement includes a conference room, the data-processing center, telephone switchboards, electrical switchgear rooms, maintenance shop, hospital equipment storage space, and an all-weather passageway to the power plant.

In addition to the rooms and areas described inside, the back page contains a partial list of hospital equipment from which memorials may also be selected. Be sure to examine this list.

The units in the following pages labeled "Reserved" are rooms and areas that have already been selected as memorials.

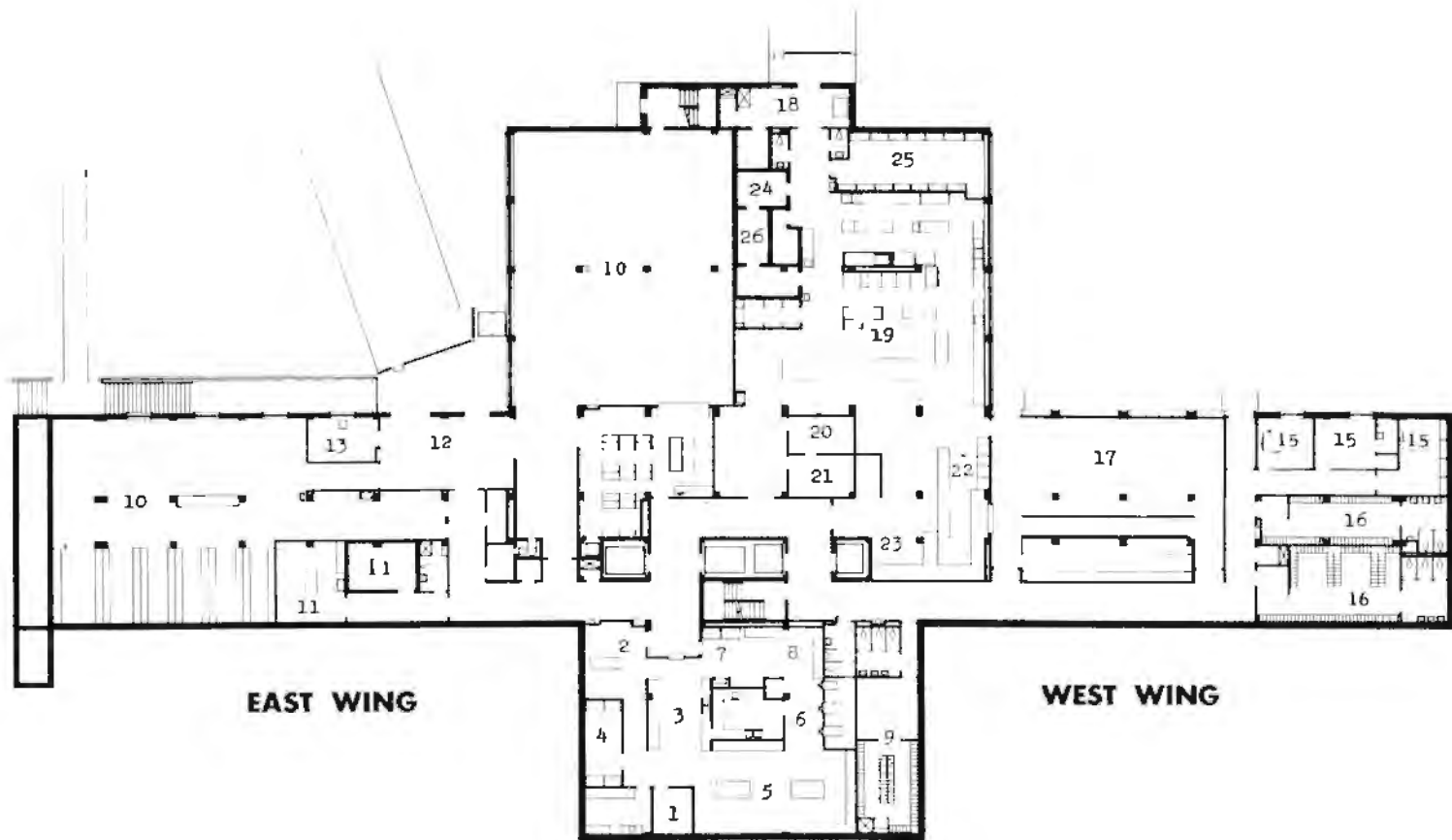
Accompanying the floor plans and commemorative and memorial lists are descriptions of the general uses, arrangements and special features of each floor.

The memorial and commemorative program is part of the current effort to raise \$500,000 to complete the Hospital, which is scheduled to open in February.

The Campaign Management Committee, which is directing this effort, consists of John J. Finley, of Wawa, chairman; Clark W. Davis of Wallingford, co-chairman; Merrill B. Hayes, M.D., of Swarthmore, Charles A. McCafferty of Springfield, Maitland Roach of Marple, J. Paul Skelly of Media and Cyril G. Fox of Media.

GROUND FLOOR

SOUTH WING



EAST WING

WEST WING

NORTH WING

MEMORIAL UNITS

No.	NORTH WING (Storage and sterilizers)			WEST WING (Cafeteria)		
1	Supervisor's office	Reserved	14	Linen Service storage	1000	
2	Supplies receiving and clean-up area	\$1000	15	Women's Board area	Reserved	
3	Non-sterile storage room	750	16	Employee locker rooms	Reserved	
4	Glove processing room	750	17	Employee cafeteria	5000	
5	Clean work area	2000				
6	Steam sterilizer area	750				
7	Sterile supplies storage and issuing area	2000				
8	Intravenous solution storage area	2000				
9	Nursing supervisory staff locker room	1500				
				SOUTH WING (Kitchen)		
	EAST WING (Supplies)			18	Food delivery area	1000
10	General Supply storerooms	2000	19	Main kitchen	Reserved	
11	Autopsy area	5000	20	Food manager's office	1000	
12	Supplies receiving area	1000	21	Dietitian's office	1000	
13	Supporting services manager's office	1000	22	Central dishwashing area	1000	
			23	Tray and cart storage area	1000	
			24	Refrigeration area	2000	
			25	Non-perishable supplies storage room	1500	
			26	Frozen foods room	1500	

Nourishment

This is the floor that "nourishes" the Hospital—literally, because it contains the food-preparation equipment, figuratively because it is where supplies are received, stored and distributed to the various departments.

The south wing is occupied chiefly by the main kitchen (19) and the general supply storerooms (10). The kitchen will offer numerous innovations designed to attain maximal efficiency and to keep the Hospital's hungry patients as happy as good meals can keep ill people.

To this end, an IBM menu-selecting unit will be installed. Patients will select their day's meals on punch cards, which will run through the

IBM unit and will compile orders much more rapidly than could otherwise be done. Tray-warming pellets will also be used and beverages will be processed through vacuum-packed units to keep them at the proper temperature until they get to the patient.

In the kitchen there is also a central dishwashing area. Here, in addition to thorough scientific cleansing, all dishes will receive a steam treatment that will maximize their freedom from bacteria. Note that the employees' cafeteria (17 in the west wing) is right off the kitchen for maximum efficiency in serving staff meals.

No. 15 in the west wing is the Women's Board area, a unit marked off as the headquarters of the activities of the remarkable Riddle Memorial Hospital's Associated Auxiliaries, which only recently turned over \$25,000 to the Hospital—the proceeds of one year's fund-raising.

The Women's Board area, the gift shop and the snack bar have all been selected as memorials by the Associated Auxiliaries. They will also operate both the gift shop and the snack bar, and they will be active in volunteer services in the Hospital, in addition to their fund-raising responsibilities.

FIRST FLOOR

SOUTH WING

EAST WING

WEST WING

MAIN ENTRANCE

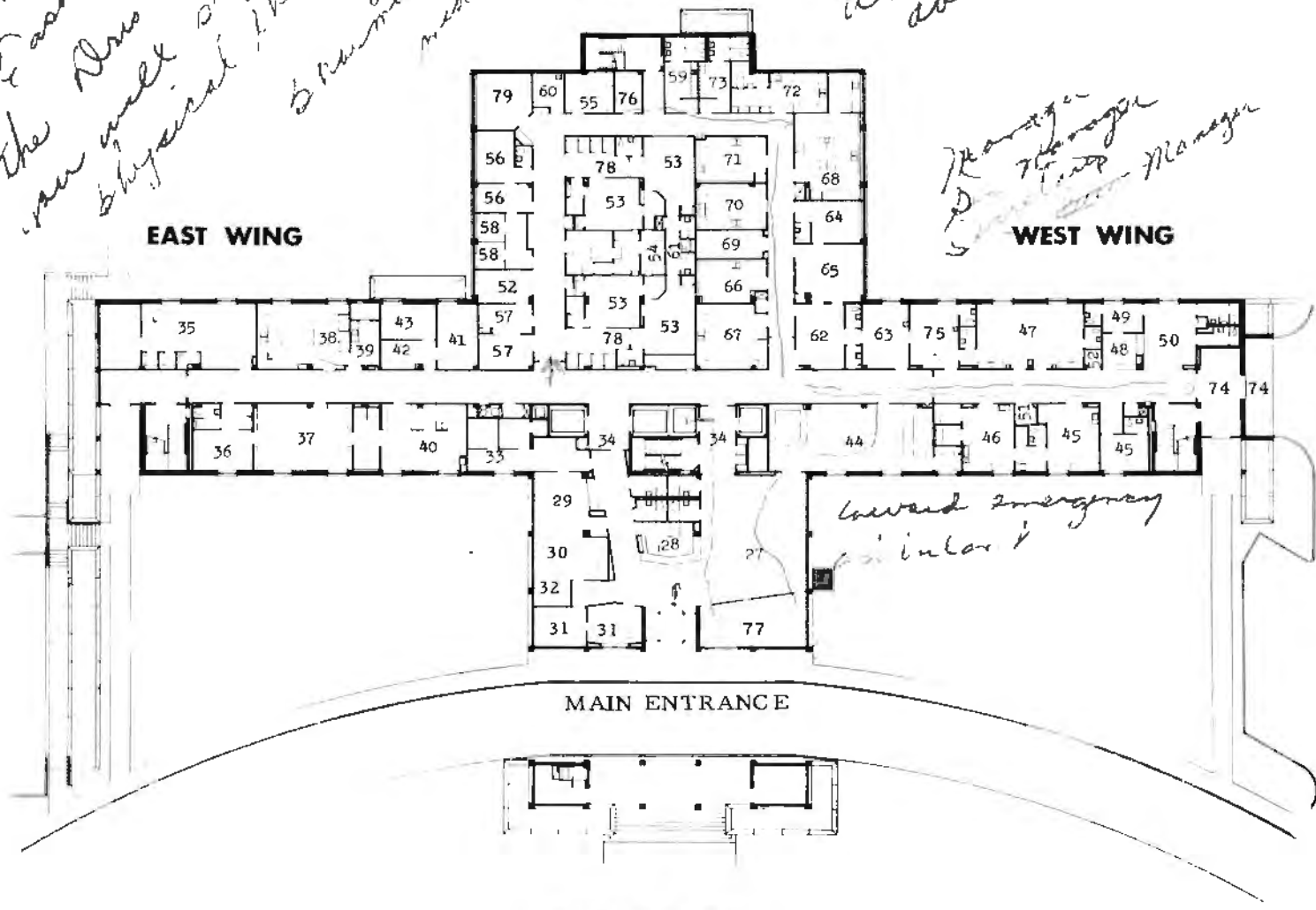
NORTH WING

*Need plan for East wing
 in the new entrance
 you will probably
 physical therapy
 & summary
 med library on the right
 doctors lounge*

*medical section
 West where the
 doctors -*

*Manager
 Manager
 Manager
 Manager*

*ward emergency
 similar*



MEMORIAL UNITS

No.	NORTH WING (Reception)		42	Nursing service general office	1000	55	Film files	1500
27	Lobby	Reserved	43	Night supervisor's office	1000	56	Radiologist's office	2500
28	Reception	Reserved				57	Reception office	Reserved
29	Cashier's area	\$2000		WEST WING (Emergency)		58	X-ray interpretation rooms	2000
30	Comptroller's office	Reserved				59	X-ray technicians' locker room	1000
31	General manager's office	Reserved	44	Snack Bar	Reserved	60	Examination room	Reserved
32	General manager's secretary's office	Reserved	45	Emergency Rooms	4500	61	Barium preparation rooms	1000
33	Admissions office	Reserved	46	Fracture room	5500	62	Outpatient waiting room	3000
34	Passenger and service elevator lobbies	Reserved	47	Patient observation suite	5000	63	Electrocardiograph laboratory	Reserved
77	Gift Shop	Reserved	48	Nurses' station	3500	64	Pathologist's office	1500
			49	Family consultation room	Reserved	65	Records center	2000
			50	Waiting room	Reserved	66	Hematology laboratory	7500
	EAST WING (Records and Library)		51	Utility area	750	67	Serology laboratory	7500
35	Physical therapy department	10,000	52	Stretcher alcove	500	68	General chemical laboratory	10,000
36	Doctors' lounge	2500	74	Emergency entrance	Reserved	69	Bacteriology laboratory	5000
37	Medical library	Reserved	75	Ambulant patient diagnostic laboratory	2500	70	Tissue laboratory	5000
38	Pharmacy	5000				71	Special studies laboratory	3500
39	Pharmacy storage	1000		SOUTH WING (Diagnostic Center)		72	Laboratory glassware processing room	1500
40	Medical records section	1500	53	Radiographic-fluoroscopic diagnostic rooms	6000	73	Laboratory technologist's locker room	1000
41	Nursing service manager's office	Reserved	54	Film developing laboratories	5000	76	X-ray supplies	1000
						78	Patients' dressing rooms	1000
						79	Deep therapy	2500

Reception and Study

The first floor is arranged so that the physicians converge on the Hospital through the east wing (doctors' lounge, medical library, records, pharmacy) and the patients through the main entrance in the north wing end, when necessary, through the emergency entrance at the end of the west wing.

The south wing is devoted to laboratories and diagnostic facilities, and includes an x-ray devel-

oper that produces a dry print in 6 minutes, as compared to the 15 minutes it used to take to get a wet one.

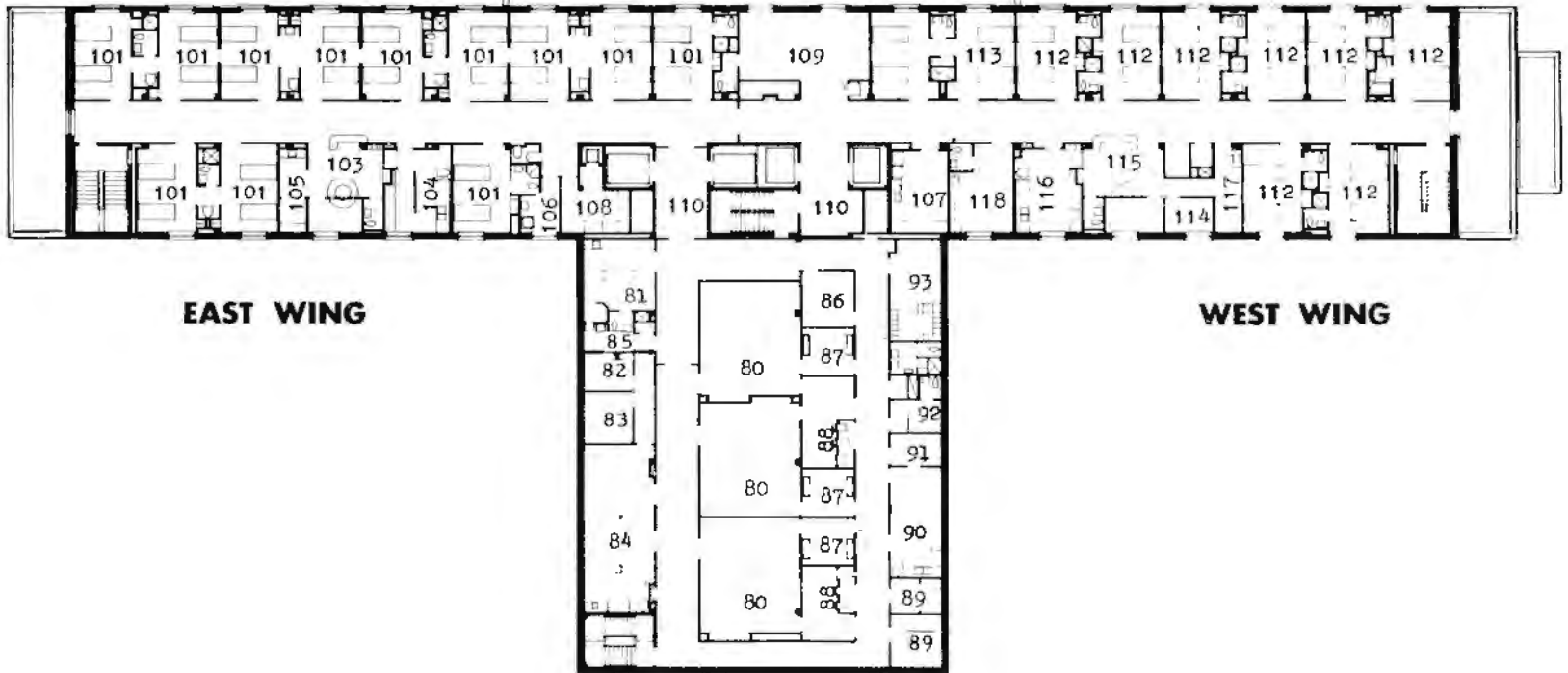
A useful feature of the west wing is the four-bed patient observation suite (47), where emergency cases can be kept until it is decided whether or not they are to be admitted as inpatients.

The north wing includes the gift shop (77) and on

the corner between the north and west wings is a room destined to be one of the most popular places in the building. That, of course, is the snack bar (44).

The area on the left side of the north wing consists of business offices and the large open space on the right (27) is the lobby.

SECOND FLOOR



EAST WING

WEST WING

NORTH WING

MEMORIAL UNITS

No.	NORTH WING (Surgical Operating Center)	EAST WING (Intensive Care)
80	Major surgical operating rooms \$25,000	101 Intensive care rooms 5000
81	Urological operating room 10,000	(Rooms 203, 207, 211, 215, 219, 223, 227, 231, 235, 239, 243, 247)
82	Operative Report Dictation Room 1000	
83	Anesthesiologist's office Reserved	103 Nurses' station and patient chart room 5000
84	Post-operative recovery room 5000	104 Nursing pack room 2500
85	Operating suite X-ray developing laboratory 1500	105 Sterile supply center 2000
86	Operating room supervisor's office 1000	106 Treatment room 3500
87	Scrub-up areas 1000	108 Linen storage area 1000
88	Operating suite sterilizing rooms 7500	
89	Instrument storage rooms 1500	
90	Work room and instrument storage area 3000	
91	Sterile surgical supply center 1000	
92	Nurses' locker room 1500	
93	Doctors' locker room 1500	
	CENTER	WEST WING (Medical/Surgical Patients)
107	Floor service kitchen 6500	112 Patient rooms 5000
109	Solarium 10,000	(Rooms 204, 208, 212, 216, 220, 224, 228, 232, 236, 240)
110	Passenger elevator lobbies 2000	114 Head nurse's office 750
		115 Nurses' station and patients' chart room 5000
		116 Nursing pack room 2500
		117 Sterile supply center 2000
		118 Examination and treatment room 3000

Surgery and Intensity

The second floor is where the healing art will be in full flower. Besides patient rooms for medical and surgical cases (west wing), this floor includes the Intensive Care Section (east wing) and the Surgical Operating Center (north wing).

The three operating rooms (80) are equipped with every proven modern means of maximizing the efficiency and safety of surgery. The very size of the rooms permit large teams of physicians to function with plenty of elbow room. The overhead ceiling-mounted telescoping anesthesiologist's tables eliminate all floor lines. Nobody will be tripped up here. And special germicidal blotters at the entrances minimize the presence of foot-borne bacteria in the operating room.

Another thoughtful arrangement in the north wing is the inclusion of the operative report dictating room (82) as almost a part of the post-operative recovery room (84). This allows the surgeons to dictate their reports of operations immediately after surgery and still be in close touch with the patients they have just operated on.

The intensive care section includes adjoining rooms, which allow one nurse to attend two patients at the same time. Where nurses must be on duty around the clock, as is often the case in intensive care situations, this procedure can considerably reduce the cost of patient care without any reduction in its efficiency.

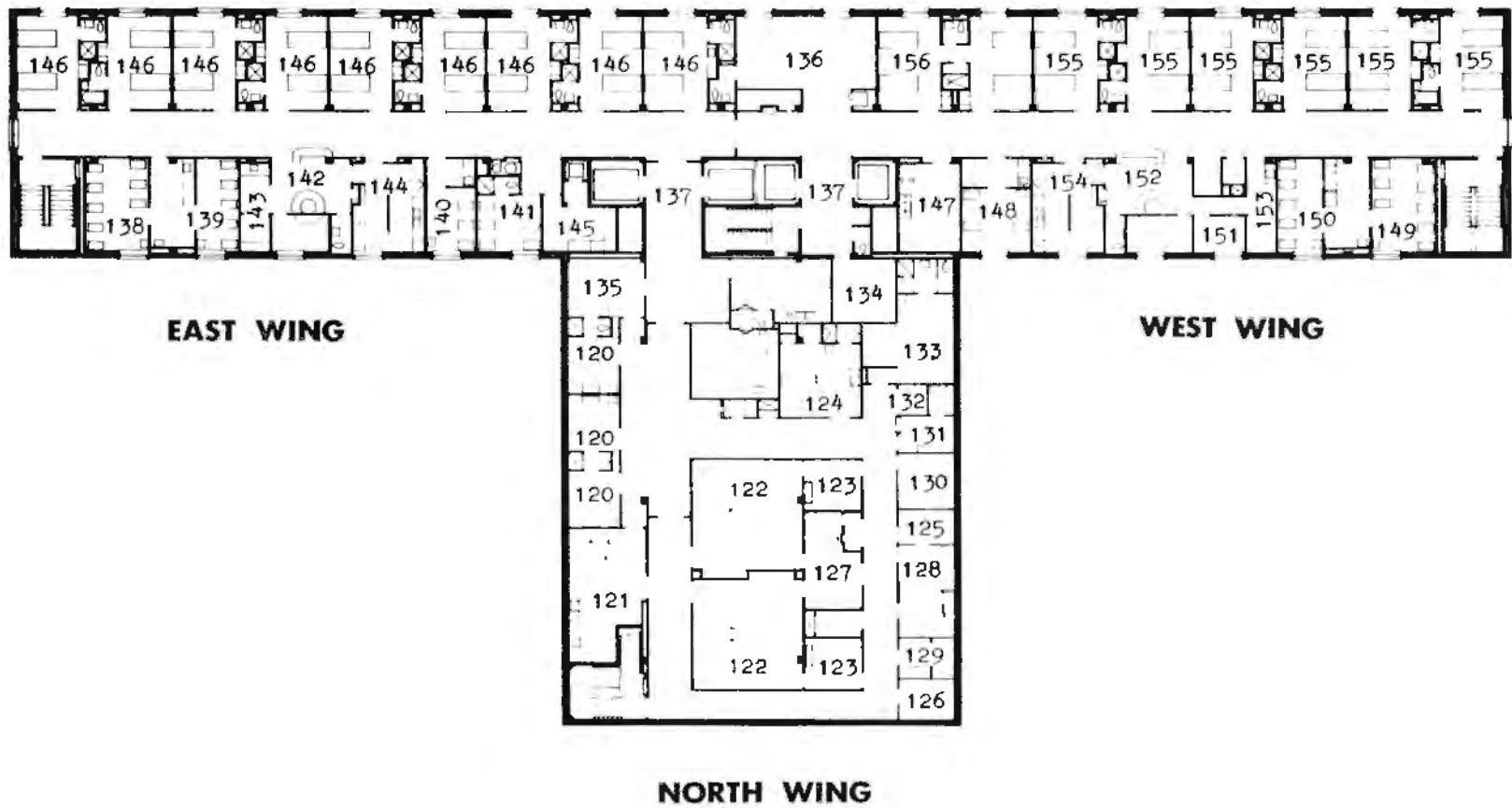
Another interesting feature of the intensive care

section is that the sliding doors between rooms are mounted on special hinges which allow them to be swung out of position so that the wall recesses into which they slide can be easily and thoroughly cleaned. This is another way of thwarting Mr. Gem.

On this floor, as on the third (see next two pages) there are two nursing stations, one each in the east wing and west wing. This limits the patient load of each station to 22. The stations are equipped with "lozy-susan" chart tables that permit doctors and nurses to work on patient charts at the same time.

A pneumatic tube system is built into the hospital, including the second floor, and can be completed and put into operation as soon as funds are available.

THIRD FLOOR



MEMORIAL UNITS

No.	NORTH WING (Obstetrics Center)		139	Five-bassinet nursery	7500
			140	Premature nursery	7500
120	Labor rooms	\$ 5000	141	Isolation nursery	10,000
121	Obstetrical recovery room	10,000	142	Nurses' station and patients' chart room	5000
122	Delivery rooms	5000	143	Sterile supply center	2000
123	Scrub-up areas	1000	144	Nursing pack room	3500
124	Labor and emergency Caesarean room	Reserved	145	Linen storage area	1000
125	Sterile supply room	1000	146	Two-bed maternity rooms	
126	Equipment storage room	1500		(Rooms 303, 307, 311, 319, 323,	
127	Obstetrical equipment sterilizing room	1000		327, 335, 343, 347)	5000
128	Work room and instrument storage area	3000			
129	Anesthesiologist's work area	2500			
130	Obstetrical supervisor's office	1000			
131	Nurses' locker room	1000			
132	Obstetrical pantry	Reserved			
133	Doctors' stand-by room	2000	147	Floor service kitchen	1500
134	Expectant fathers' pacing room	Reserved	148	Close-observation nursery	7500
135	Obstetrical admissions center	2000	149	Eight-bassinet nursery	10,000
			150	Five-bassinet nursery	7500
	CENTER		151	Head nurse's office	750
136	Solarium	Reserved	152	Nurses' station and patients' chart room	5000
137	Passenger elevator lobbies	2000	153	Sterile supply center	2000
			154	Nursing pack room	2500
			155	Patient rooms	
	EAST WING (Nursery and Maternity)			(Rooms 304, 308, 312, 316	
				320, 324, 332, 340)	5000
138	Eight-bassinet nursery	10,000	156	Patient ward	Reserved

WEST WING (Maternity Patients)

Deliveries and Diapers

This is the floor where the delivery room nurses (like the operating room nurses on the second floor) are not allowed to wear any garments of synthetic fabrics. And that's only one of the countless precautions taken to keep the delivery rooms (122) safe during those crucial, dramatic moments when a new life is being brought into the world.

Another is an arrangement whereby the exhalations of the delivery room patients (like the operating room patients), containing anesthetic gases, is suctioned directly out of the building without being expelled into the delivery room atmosphere.

Another very important room on this floor is No.

134. That—in a hospital that thinks of everything — is the expectant fathers' pacing room.

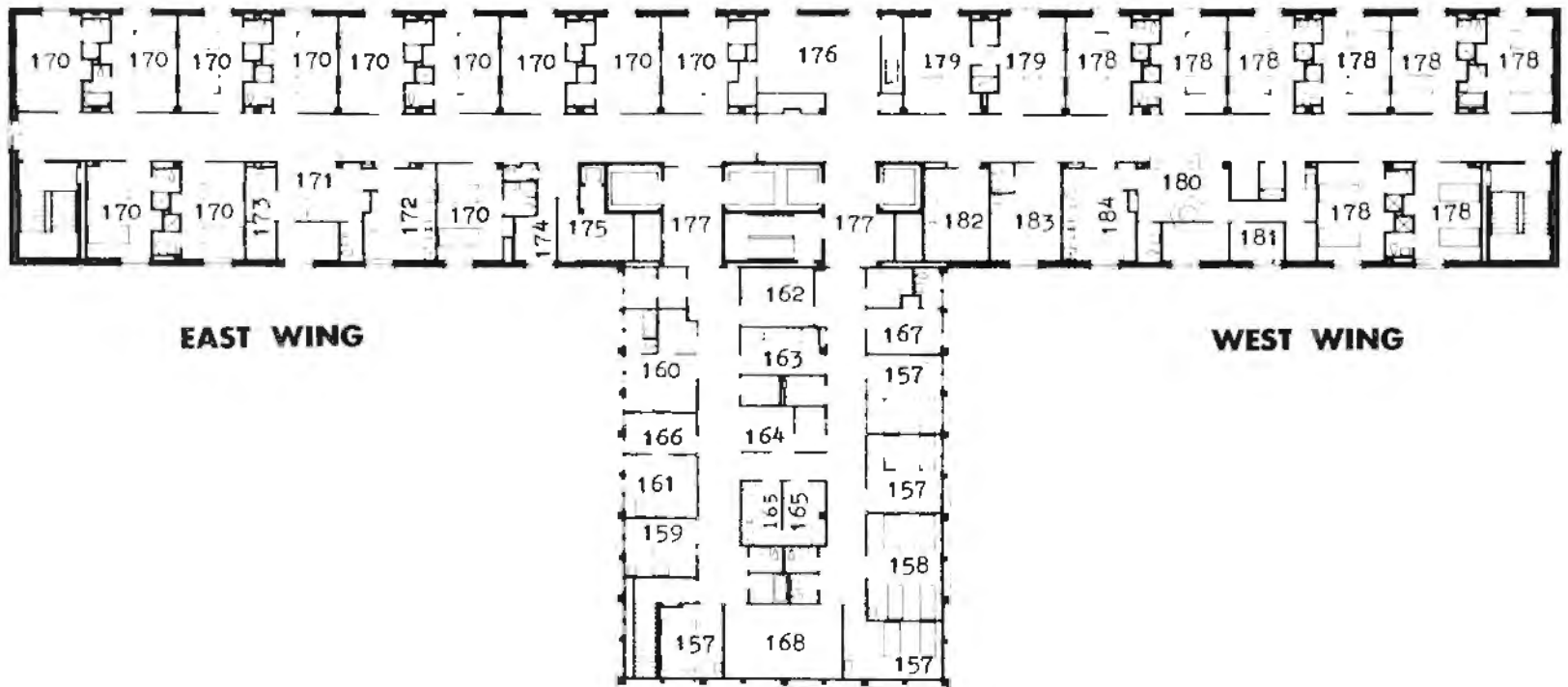
The north wing is appropriately called the obstetrics center because it contains every device, instrument, area and arrangement conducive to the safest, healthiest birth of babies. There is an obstetrical admissions center (135), three labor rooms and a doctors' standby room (133), in addition to the two delivery rooms.

Along with the maternity rooms (146), the east wing contains an eight-bed nursery (138), a five-bed nursery (139), a nursery for premature babies (140) and an isolation nursery (141). As on the

second floor, both the east wing (142) and the west wing (152) contain nurses' stations and chart rooms.

Another valuable feature of both this floor and the one above and below it is the solarium (136), a large alcove designed for the use of visitors and for ambulatory patients. It is aptly named because on all floors the solarium has a "southern exposure." So, too, do most of the patient rooms on most floors. If Ole' Mr. Sun has any curative powers, or just the ability to cheer those who need it, he will be given every opportunity to work his magic on the patients of Riddle Memorial Hospital.

FOURTH FLOOR



EAST WING

WEST WING

NORTH WING

MEMORIAL UNITS

No.	NORTH WING (Pediatrics Center)		(Rooms 403, 407, 411, 415, 419, 423, 427, 431, 435, 439, 443, 447)	5000
157	Patient rooms (Rooms 474, 478, 482, 490, 494, 498)	\$ 5000	171	Nurses' station and patients' chart room
160	Isolation room	7500	172	Nursing pack room
161	Nursery	5000	173	Sterile supply center
163	Pantry	6500	174	Treatment room
164	Nurses' station and patients' chart room	5000	175	Linen storage area
165	Sterile supply center	2000		
166	Nursing pack room	Reserved		
167	Parents' stand-by room	4000		
168	Playroom	Reserved		
	CENTER			
176	Solarium	10,000	178	Patient rooms (Rooms 412, 416, 420, 424, 428, 432, 440)
177	Passenger elevator lobbies	2000		5000
	EAST WING (Medical/Surgical Patient Care)		179	Four-bed childrens' ward (Rooms 404-408)
170	Patient rooms			Reserved
			180	Nurses' station and patients' chart room
			181	Head nurse's office
			182	Floor service kitchen
			183	Examination and treatment room
			184	Sterile supply center
				2000

All This and TV, Too

The fourth floor is for kids and grownups suffering from ordinary illnesses (and getting the extraordinary care that Riddle's unusual facilities allow).

The north wing is the pediatrics center ("pediatrics" derive from the Ancient Greek words "paidos," child, and "iatrikos," healing) and includes a large, well-windowed playroom (168) and a "parents' standby room" (167) as well as patients rooms, isolation room (160), nursery (162) and a centrally located nurses' station and chart room (164). Here the difficult art of tending ill youngsters will enjoy every facility that can assist it.

On this floor, as on the second and third, the solarium (176) includes telephones, lavatories,

ash trays and other items useful to people visiting patients.

Both the east and west wings will be assigned to medical and surgical patients. There will be 44 beds in the two wings. All the rooms are the same; some will contain two beds, some one. And on this floor, too, each wing will have its own nursing station and a special office for the head nurse in charge of the floor.

The beds in these rooms are crankless and motorized so that the patient can adjust them himself. This has the double advantage of allowing the patient to practice therapeutically valuable self-help and freeing the nurses for less menial functions. Each bed will also be equipped with a two-way

communications unit between the patient and the nurses' station.

Where television sets are installed, they will be wall-mounted so that there are no lines along the floors to trip over. Each set will also be equipped with a pillow speaker and a control element that the patient can operate from his bed. This will confine the sounds of gunplay and canned laughter to the person watching the show.

Note that this floor, like the second and third has a floor service kitchen (182). This augments the main kitchen on the ground floor and facilitates the preparation of special meals for patients on diets and those with unusual nutritional problems.

K 13-8146 =

EQUIPMENT OPPORTUNITIES

A brand-new community hospital requires more than bricks and mortar to heal the sick. Many expensive types of equipment are "musts." This list indicates a few of many items which are presented as memorial opportunities. Other equipment opportunities are available through the hospital office.

Emergency room examining table	\$ 800	Operating room instrument	\$ 100
Motorized beds	525	(individual pieces of equipment) to	7000
Operating tables	2100	Cystoscopic X-ray machine	6000
	to 4500	Sonic energy instrument cleaner	3500
Portable X-ray machine	2000	Laboratory sterilizer	4500
Dressing sterilizer for the Central Supply Section	18,500	Recovery room stretcher	500
Instrument sterilizer	23,500	Bassinet and stand	200
Diagnostic X-ray machine	17,000	Heated bassinet	300

BOARD OF DIRECTORS

Charles A. McCafferty, President
Springfield, Pa.

J. Paul Skelly, 1st Vice-President
Media, Pa.

Cyril G. Fox, Treasurer
Media, Pa.

Clark W. Davis, 2nd Vice-President
Wallingford, Pa.

Herbert S. Loveman, Secretary
Media, Pa.

Robert W. Beatty, Esq.
Wallingford, Pa.

Richard B. Dingfelder
Upper Providence, Pa.

Clarence L. Jordan
Medio, Pa.

Robert Borden
Media, Pa.

Louis Essaf
Glen Riddle, Pa.

William L. Long
Springfield, Pa.

C. Stuart Brown
Moylan, Pa.

Alex Ewing
Wallingford, Pa.

Anne H. Marlowe
Springfield, Pa.

William L. Butler
Newtown Square, Pa.

John J. Finley, Jr.
Rosemont, Pa.

Maitland Roach
Springfield, Pa.

J. Herbert Chambers
West Chester, Pa.

Willis Hayes
Media, Pa.

Margel Wilson
Swarthmore, Pa.

Edward E. James, General Manager

RIDDLE MEMORIAL HOSPITAL

MEDIA, PENNSYLVANIA

NON-PROFIT ORG.
U.S. Postage
PAID
Permit No. 127
Media, Penna.